

CAPRICORNIA BUDGERIGAR SOCIETY INC.



The Secretary – CBS Inc.
P.O. Box 10165
Frenchville
Queensland 4701

Webpage: www.capbuds.org

February 2025

Dear Members,

As the new year begins, we can get excited by what the year has entailed for us. Beginning with our Annual Show followed by our club Young Bird Selection and the Zone Selection Show leading into the biggest show of the year the Trill tm Expert ANBC National Show to be held in Cairns and hosted by our own zone. **Congratulations!** to fellow club member Ian Schneider on his appointment as one of the four judges for the National Show.

With our annual show only six weeks away, I hope everyone is busy preparing a large show team to make this a great show to kick off the year. The show schedule can be found further on, in this newsletter. With the Nationals in our own backyard this year, I urge all our members to put as many birds as possible up for selection at the Nationals. This includes beginner and new members as your birds are most likely better than you think they are, and it's surprising how many beginners do well at the Nationals. After all, if you get a bird selected to the Nationals it is in the top 21 in Australia for its variety, so give it a go.

With the three main varieties for the proposed new AOSV class being introduced in Cairns as a display, I've included an article on each to hopefully give members a better understanding of these varieties and encouragement to maybe take one of them on.

Don't forget our first meeting of the year to be held on 7/2/25 come along and have your say or just get all the latest club news straight from the budgie's beak, have a coffee and a friendly chat. Bring along some of your budgies for the table show, a great way of learning the finer points of the birds. Also, Orby (Craig Sander) is going to give a presentation on feeding for success.

Russell Ogden
(Newsletter Editor, CBS Inc.) ogdenrc@bigpond.com

MEMBERS INFORMATION PAGE

- **Committee Members:** Confirmed at AGM

-

| | | |
|-----------------|-----------------|--------------|
| President: | Russell Ogden | 0437 025 793 |
| Vice-President: | Kev O'Callaghan | 0411 956 345 |
| Treasurer: | Michael Evans | 0409 160 569 |
| Secretary: | Shayla Evans | 0408 731 846 |

- EMAIL Addresses: To allow for more efficient distribution of club information, please forward a test email or your email address to cbudgerigars@gmail.com and for newsletters to ogdenrc@bigpond.com. **Thanks to all those who have forwarded these details previously.**

- **SHOW & WIN!!!!!!!** Starting at our 2023 Breeders Show, you will become eligible to win a \$200 Credit at our Annual Auction by showing at the 3 Major Shows (Breeders 2023, Annual 2024, Young Bird Show 2024). You will receive one ticket for showing 1 to 10 birds, 2 tickets for 11 to 20 entries, etc. After the Young Bird Selection Show in 2024, the winner will be drawn. The more you show, the better chance you have to win. It is only open to CBS Inc members. You must show at all 3 shows unless you are judging the show or are genuinely ill or have a family emergency. The aim of this incentive is to encourage members to show consistently at all 3 shows.

- Services Section: The Club Shirt is now being worn by many members. If you want to purchase one, contact Shayla Evans 0408 731 846 (Please do not call after 7:00 pm) Shayla will also have a supply of 2024 rings, (65 cents each and sold in lots of 25, postage is extra \$5.00) and show cages and cage fronts if anyone needs some.

- Future CBS Variety of the Year are as follows: 2025: - Greywing. 2026: - Crested. These are judged at the Annual Show each

-

The Saddleback Budgerigar

The first recorded Saddleback budgerigar appeared in the aviary of Les and Barry Ryan of [Sydney, NSW](#) during the 1975 breeding season. The Ryan's mated a pair of Normal Skyblues to start a new line of Blues. In the nest of the first round, one chick started showing the Opaline characteristics. As the bird grew and feathered up, the Opaline characteristics became more evident in the head and the saddle area but the wing marking was different to that of an Opaline in so far as the ground colour of the wing was white and not that of the body colour as in the true Opaline.

The saddleback mutation is the result of a genetic mutation that affects the distribution of pigmentation in the bird's feathers. This mutation leads to a pattern of coloration that resembles a saddle on the bird's back, hence the name "saddleback". With this in mind, the distinctive pattern of coloration on saddleback budgerigars is characterized by a clear demarcation between the back and belly feathers, with the back feathers being a different color to the belly feathers. The back feathers are typically green or blue, while the belly feathers can be yellow, white, or a mix of both.

Identification of The Exhibition Saddleback Budgerigar

According to [The Standard](#), the exhibition Saddleback budgerigar general body colour rump and underparts are solid and uniform throughout. The face and forehead ground colour is yellow for green series, and white for blue series, with the exception of the yellow-face series. The ground colour should extend over the back of the head into the mantle. Dark grey grizzled suffusion must appear in the ground colour on the back of the head and mantle.





The back and wing coverts (upper & under) are heavily grizzled with grey in the ground colour. These merge into definite black in the secondary and primary flights. Minimal signs of markings on the neck and cheeks, back of head and mantle.

The Saddleback Budgerigar has a deep and wide mask that extends beyond two large cheek patches. To that end, six evenly spaced, large, round black throat spots ornament the mask. In addition, the base of the cheek patches partially covers the two outer spots. It features a dark eye with a white iris ring, and its feet are blue/grey in color. In terms of gender, the cock has a blue cere, while the hen has a brown cere.

Below is a summary of the colors of the Saddleback budgerigar's cheek patch, tail quill, and tail feathers.

| SADDLEBACK | | | | | | |
|--------------------|------------------|----------------|-------------|-------------|------------|-----------------------------------|
| Variety | Eye | Body Colour | Feet & Legs | Cheek Patch | Tail Quill | Tail Feather |
| Normal Light Green | Black/White Iris | Full Intensity | Blue/Grey | Violet | Black | Mid Blue with Turquoise suffusion |
| Dark Green | Black/White Iris | Full Intensity | Blue/Grey | Violet | Black | Dark Blue |
| Olive Green | Black/White Iris | Full Intensity | Blue/Grey | Violet | Black | Dull Blue/Black |
| Grey Green | Black/White Iris | Full Intensity | Blue/Grey | Grey | Black | Black |
| Normal Sky Blue | Black/White Iris | Full Intensity | Blue/Grey | Violet | Black | Mid Blue with Turquoise suffusion |
| Cobalt | Black/White Iris | Full Intensity | Blue/Grey | Violet | Black | Dark Blue |
| Mauve | Black/White Iris | Full Intensity | Blue/Grey | Violet | Black | Very Dark Blue with Black Sheen |
| Violet | Black/White Iris | Full Intensity | Blue/Grey | Violet | Black | Deep Royal Blue |
| Grey | Black/White Iris | Full Intensity | Blue/Grey | Grey | Black | Black |

SADDLEBACK



SADDLEBACK WITH NORMAL



"SADDLE"

Judges / Breeder Comments

Wing markings are grazed on this variety and the overall markings give the appearance of a saddle on the back of the bird.

Very few birds of this variety are bred today and it could be an interesting variety to be challenged with.

If the variety is not bred it will soon disappear and be lost forever.

Breeding Rainbow Budgerigars

Identification of Rainbow Budgies

If you've had the pleasure of owning or encountering a Rainbow Budgie, you know they're a captivating sight for both bird lovers and pet owners. These charming birds are created through selective breeding, where specific mutations are combined to give them their distinct appearance. Getting to know their physical traits and being able to identify their gender can make the experience of caring for these beautiful creatures even more rewarding.

Physical Characteristics

You can recognize a Rainbow Budgie by its vibrant feathers, which come from blending various mutations. The typical Rainbow Budgie is described as a yellow-faced blue series bird with opaline and clearwing (whitewing) mutations. These mutations team up to create the bird's soft and pastel color palette, including hues like sky blue, cobalt, mauve, violet, or gray.

The specific colors depend on factors like violet and gray factors, affecting both blue and green shades. Dilution mutations such as Greywing, Full-Body-Color Greywing, Clearwing, and Dilute also influence the bird's appearance, with Dilute causing a noticeable reduction in markings and color intensity.

Now, let's break down some key mutations:

- 1. Opaline Mutation:** Alters how color and markings are distributed on the bird, contributing to the distinct look of the Rainbow Budgie.
- 2. Clearwing (Whitewing) Mutation:** Essential for creating the Rainbow Budgie, this mutation results in very light gray or white/yellow wing feathers, adding to the bird's pastel appearance.
- 3. Yellow or Golden Face Mutations:** These mutations introduce a yellow layer to the bird's face, enhancing the overall colorful look of the Rainbow Budgie. There are three types, each affecting the bird's appearance in different ways.

Sex Differentiation

Determining the gender of a Rainbow Budgie involves observing the color of the cere, the area above the beak where the nostrils are located. Generally, males have a blue cere, while females have a brown one. However, there can be exceptions, especially in birds with specific mutations or those that are albino, lutino, or mottled, where cere colors may not follow the usual pattern.

For young birds, males typically have a bluish-pink or light purple cere, and females have a bluish-white cere, often with a

hint of pink around the nostrils. It's crucial to keep in mind that these general guidelines may have exceptions, and cere color can change with age, health, and hormonal shifts.

Genetics and Breeding Rainbow Budgies

Breeding Rainbow Budgies is a captivating journey that demands a thorough grasp of avian genetics. There are no distinguishable species in these birds, but rather they are the result of intentional breeding, which incorporates certain genetic mutations. Here are some insights on how to breed Rainbow Budgies based on their genetics.

Understanding Rainbow Budgie Genetics

Rainbow Budgies boast a distinct look, crafted by combining four specific gene mutations: Yellow-face, Clearwing, Opaline, and a Blue series base color. Let's break down how each mutation contributes to their unique appearance:

1. **Yellow-face Mutation:** This mutation introduces a yellow tint to the budgie's facial feathers. Variations like Golden Face, Mutant 1, and Mutant 2 exist, with Mutant 2 being especially popular for its significant impact on the bird's color.
2. **Clearwing Mutation:** Central to the pastel charm of Rainbow Budgies, the Clearwing mutation results in exceptionally light gray or white/yellow wing feathers.
3. **Opaline Mutation:** Altering the distribution of color and markings on the bird, the Opaline mutation plays a key role in the distinctive appearance of Rainbow Budgies.
4. **Blue Series Base Color:** The base color of a Rainbow Budgie varies, encompassing shades like sky blue, grey, cobalt, mauve, or violet. This base color serves as a crucial foundation for the bird's overall aesthetic.

Breeding Rainbow Budgies

Breeding true Rainbow Budgies poses challenges, especially with the scarcity of certain mutations, notably the Clearwing

mutation. Here are steps and considerations for successful

Rainbow Budgie breeding:

- 1. Selecting the Right Pair:** Choose a male and female with the required mutations. One parent should have the Yellow-face trait, and both should either carry or express the Clearwing mutation. The male should exhibit the Opaline mutation or carry the gene, and both birds should be of the Blue series or carry the genetic trait.
- 2. Breeding Environment:** Create a stress-free setting for the breeding pair. Provide a spacious cage, a suitable nesting box, and a nutritious diet to support their health and fertility.
- 3. Monitoring and Care:** Once eggs are laid, ensure proper incubation and provide appropriate care for the chicks after hatching. This involves offering a balanced diet and maintaining a clean nesting area.
- 4. Genetic Variability:** Anticipate variability in the offspring. Due to the intricate nature of genetic inheritance, not all chicks may display the desired Rainbow mutations.
- 5. Ethical Breeding Practices:** Prioritize the well-being of the birds over achieving specific color mutations. Avoid inbreeding, and make sure all birds receive adequate veterinary care.

Challenges and Considerations

Successfully breeding Rainbow Budgies requires patience and a solid understanding of avian genetics, especially considering the challenges posed by the rarity of certain mutations like Clearwing. It's paramount to adhere to ethical breeding practices, prioritizing the well-being and contentment of the birds throughout the process.

Darkwings – The Worlds First Clearbody

An Extract of an article by Don Burke

Australia produced the world's first clearbody budgerigars way back in 1930. Not only that, but around 1962 a blackwing yellow (then incorrectly known as a greywing yellow) won Champion of the NSW State Show at the Sydney Town Hall. The winning bird had a dazzling pure yellow body with an inky-black wing colour and I believe that it belonged to Frank Amos. This is arguably the greatest budgerigar breeding triumph in Australia's history. Today, these birds are known as Darkwings. Genetically they are Blackeyed Yellows or Whites with Dark Wings. I fell in love with them at first sight, and began breeding them in 1959. The Texas Clearbody turned up in 1950, and later on in 1955 the Easley Clearbody also came along. Our Australian Darkwing mutation was around in 1930! All this became clearer when my wife Marea gave me a copy of Neville Cayley's 'Budgerigars in Bush & Aviary' for Christmas. It was the 1935, second edition of this book first published in 1933. This book is dazzlingly luminous for its time.

Darkwings are a **modifier-based** variety like Blackeyed Yellows and Whites, Clearwings and Banded Pieds, thus normal breeding charts are largely unhelpful. All Darkwings are, at base, either Blackeyed Yellows or Whites. That is, they are a compound variety. The Darkwing mutation re-darkens the wings on Blackeyes, Greywings, Clearwings and Dilutes. So far as we know, it does not affect any other variety. When combined with Blackeyed Yellows and Whites, the result is the Darkwing variety that we see on the showbench. Darkwing is a semi dominant variety, with the Single factor birds being of a lighter wing colour than the Double factor (DF) Darkwings. Genuine Darkwing Blackwing Yellows or Whites must be a DF bird. Almost all Darkwings are SF birds, so if you cross a SF Darkwing to a SF Darkwing you get 50% SF Darkwings, 25% DF Darkwings and 25% Blackeyed Yellows or Whites. SF mated to DF produces 50% of each type in the progeny. DF mated to DF produces 100% DF babies. SF Darkwing mated to Blackeye produces 50% of each to in the progeny. DF Darkwing mated to Blackeye produces 100% SF Darkwings. SF Darkwing mated to normal produces 100% normals split for Blackeye, of which 50% are also split for Darkwing. DF Darkwing mated to normal produces 100% Normals split for both Darkwing and Blackeye.

THE DEVIL IN THE DETAIL. The real challenge in Darkwings is the Blackeye issue: that is, that Blackeye is not a mutation as such. Dilute is the mutation which can be modified into pure white or yellow, which we then call a Blackeyed White or Yellow. The modifiers are innately complex and unstable – they do not act in a simple dominant or recessive mode; instead you get blending inheritance. Put another way, outcrossing Darkwings or Blackeyes to normals does enormous damage to their colour. Blackeyes suffer both wing and body colour darkening (ie suffusion), but Darkwings mostly just suffer body colour darkening. This damage takes a talented breeder about 5 generations to largely conquer, if you don't outcross again.

FOR THE PURISTS. Strictly speaking, Darkwing is not dominant to Blackeye. These two mutations act independently of each other, that is, all Darkwings are Double Factor Blackeyes regardless of whether they carry one or two Darkwing genes. Put technically, the Darkwing gene is not a multiple allele of dilute, Greywing or Clearwing. For that matter,

Clearwing is not a mutation at all: it is just a heavily modified Greywing. The mistaken belief that clearwing is a separate mutation is the root cause of the poor colour in modern Clearwings worldwide. I will write an article soon on the heredity of clearwings.

THE STANDARD. Mask and Spots: Mask to be clear, wide and deep, (not cleft) extending beyond large cheek patches containing six large, round evenly spaced dark grey or black spots. Each outer spot is partially covered by the base of the cheek patches. General Body Colour: Back, rump, breast, flanks and underparts to be a solid and even shade throughout. Markings: On cheeks, back of head, neck and wings, approaching black, clearly defined and symmetrical on appropriate ground colour. Eyes: Black with a white iris ring Darkwing Group: This includes Yellow Faced Blue Series, Opaline and Cinnamonwing combinations with Darkwing. The Standard for each of these birds is as for Darkwing modified by the requirements of each of the varieties with which it is combined. Note 1: Colour of markings on double factor birds are darker than markings on single factor birds. Note 2: The cheek patch for the Cinnamon form may be paler than the Non Cinnamon form Note 3: The Darkwing combined with Opaline and/ or Cinnamonwing may be more likely to be Yellow (or White) (i.e. less suffused with a standard colour on body) but they should not be given preference over the other standard Darkwings. (i.e. non opalines and non cinnemons)

"I finally did it. I bought a pair of shoes with memory foam insoles. No more forgetting why I walked into the kitchen."



CBS Beginner Points

| Beginners Name | 2026 A/S-- B/S | 2025 A/S-- B/S | 2024 A/S-- B/S | 2023 A/S-- B/S | 2022 A/S-- B/S | 2021 A/S-- B/S | 2019 A/S-- B/S | 2018 A/S-- B/S | Prior Points | Total |
|-------------------------------|-------------------------------|-------------------------------|-------------------------------|-------------------------------|-------------------------------|-------------------------------|-------------------------------|-------------------------------|-------------------------|--------------|
| Tom Bartlem & Family | | | 0 0 | 0 0 | 0 0 | 0 0 | 0 0 | 0 0 | 0 | 0 |
| Mark Bartley | | | 0 0 | 0 0 | 0 0 | 0 0 | 0 0 | 0 0 | 0 | 0 |
| Ashley Bundesen | | | 0 0 | 0 0 | 0 0 | 0 0 | 0 0 | 0 0 | 0 | 0 |
| Craig Cook | | | 0 0 | 0 0 | 0 0 | 0 0 | 0 0 | 0 0 | 0 | 0 |
| Michael & Shayla Evans | | | Elevated | 2 5 | 2 1 | 0 1 | 0 0 | 0 0 | 0 | 11 |
| Gary Gleadhill | | | 0 0 | 0 0 | 0 0 | 0 0 | 0 0 | 0 0 | 0 | 0 |
| Renz & Laurie Key Partnership | | | 1 0 | 0 0 | 1 2 | 0 0 | 0 0 | 0 0 | 0 | 4 |
| Jason Major | | | 3 0 | 0 0 | 0 0 | 0 0 | 0 0 | 0 0 | 1 | 4 |
| Gareth Miggins | | | 0 0 | 0 0 | 0 0 | 0 0 | 0 0 | 0 0 | 0 | 0 |
| Nick Mullins | | | 0 0 | 0 0 | 0 0 | 0 0 | 0 0 | 0 0 | 0 | 0 |
| Ron Robinson | | | 0 0 | 0 0 | 0 0 | 0 0 | 0 0 | 0 0 | 0 | 0 |
| Craig Sander | | | 0 0 | 1 0 | 0 0 | 0 0 | 0 0 | 0 0 | 0 | 1 |
| Kyle Saunders | | | 0 0 | 0 0 | 0 0 | 0 0 | 0 0 | 0 0 | 0 | 0 |
| Steve Scott | | | 0 0 | 0 0 | 0 0 | 0 0 | 0 0 | 0 0 | 0 | 0 |
| Peter Stengord | | | 0 0 | 1 0 | 0 0 | 0 0 | 0 0 | 0 0 | 0 | 1 |
| Mark Walker | | | 0 0 | 0 0 | 0 0 | 0 0 | 0 0 | 0 0 | 0 | 0 |
| Lyn Walsh | | | 0 0 | 0 0 | 0 0 | 0 0 | 0 0 | 0 0 | 0 | 0 |
| Alan Wayman | | | 0 0 | 0 0 | 0 0 | 0 0 | 0 1 | 0 0 | 0 | 1 |
| Qing Wu | | | 0 0 | 0 0 | 1 1 | 0 2 | 0 0 | 0 0 | 0 | 4 |

Australian Wildlife Supplies

Hi, we would just like to let you know that **Australian Wildlife Supplies** are now going to do a **Seed Run up North every 3 months** starting our first run on the **2nd, of September** to order people can email, send sms ph or order online, if you could please let all the members know would be appreciated.

Seed Prices are as follows

MIXES

| | |
|------------|------|
| Finch Mix | \$40 |
| Budgie Mix | \$42 |
| Canary Mix | \$42 |
| Sm Parrot | \$40 |

PLAIN SEEDS

| | |
|--------------------|------|
| Red Panic | \$40 |
| Yellow Panic | \$43 |
| W/French Millet | \$38 |
| Panorama Millet | \$38 |
| Jap Millet | \$38 |
| Canary Seed | \$46 |
| G/Stripe Sunflower | \$44 |
| Rape Seed | \$29 |
| Hulled Oats | \$32 |

Orders over 10bags are discounted by 10%

--
Kindest Regards
Ray & Tereena Wust
Australian Wildlife Supplies
Ph. 0417749501

CBS Inc.---Calendar of Events---2025

Note that some Friday Night meetings have been changed to follow a Show or Club event.

| | | | | |
|----------------------|---|---|--------------------|---|
| 12 Jan Sunday | ABS Inc Auction | Beenleigh Show Grounds Brisbane | | |
| Jan 14 Tuesday | Committee Meeting Discuss Annual Show, Auction, Judge for YB Show & Breeders Show Zone Matters eg. carers etc. Incorporation review. | Evans residence | 5.45 pm | |
| Feb 07 | General Meeting Judges Meeting to follow. | North Rockhampton High School (NRHS) | 7.15pm | <u>Table Show</u> A/A & Y/B & N/F <u>FEATURE</u> : My Management Program- Feeding for success” Craig Sander. |
| March 07 | General Meeting | North Rockhampton High School (NRHS) | 7.15pm | <u>Table Show</u> A/A & Y/B & N/F <u>FEATURE</u> : Show Preparation – Russell Ogden |
| March 10 Monday | SHOW ENTRIES due by 8:00pm | Phone, Text or email Show Secretary | | |
| March 15 Saturday | 57th ANNUAL SHOW Judge: TBC by Judges Panel Selling class included. | Nth R'ton High School Hall. | Bench by 8:50am | A/A & Y/B & NF Judging commences 9:00am |
| March 18 Tuesday | Committee Meeting Discuss ZONE & ANBC Agendas. Auction details Club Trip | Evans residence | 5:45pm | |
| April 04 | General Meeting | NRHS | 7.15pm | <u>Table Show</u> A/A & Y/B & N/F <u>FEATURE</u> : :Breeding on Feather for Feather. Ian Schneider |

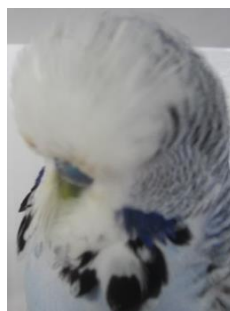
| | | | | |
|---|---|---|--|--|
| April 05 Saturday | Wynnum Auction | Capalaba Showgrounds Smith Street | | |
| April 07 CBS Inc. ANNUAL AUCTION ENTRIES DUE TODAY!!!!!!! | | | | |
| Easter: G o o d F r i d a y April 18 – Monday April 21 | | | April 25. ANZAC Day | |
| May General Meeting | May General Meeting to follow Young Bird Selection Show | | | |
| May 03 Saturday | CBS INC YOUNG BIRD SELECTION SHOW. May General Meeting to follow this SHOW Draw of CLUB REWARDS for credit of \$200 at CBS Auction | Mount Larcom Showgrounds Day of Show entries close at 8:30 am. CBS Members Only | Benching by 9:00am | Y/B Rung 24 & NF Rung 25 Judging commences by 9:10am CBS Members Raffle drawn. |
| May 17 Saturday | North Qld Budgerigar Zone Inc: 1. Judges Panel & 2. Delegates Meeting. | Venue: MACKAY | | 3:00 pm Judges Meeting TBC 3:30 pm Zone Delegates Meeting TBC |
| 18 May Sunday | North Qld Budgerigar Zone Inc. CHAMPIONSHIP SHOW. | Venue: MACKAY | | Benching by 8am Judging starts after benching |
| Friday May 23 Saturday 24 Sunday 25 Monday 26 | ANBC C'SHIP SHOW | North Queensland Budgerigar Zone CAIRNS | See ANBC Website for information and details, eg, Venue, times, etc. | |
| May 26 Monday | ANBC Delegates Meeting | CAIRNS | | |

| | | | | |
|--|---|---|--------------------|--|
| No JUNE General Meeting | | | | |
| Sat June 07 | Pre-Auction Dinner | Venue: Rocky Sports Club. Wandal TBC | 6.30 for 7.00pm | North R'ton Hall opened from 2-4pm for setup & birds to be dropped off. |
| June 08 Sunday | ANNUAL WINTER AUCTION | Nth R'ton High School Hall. | Bench by 7.45am | View 8.am Starts at 9:00am |
| Sun June 15 BC&CBS Annual Show Bundaberg. Sat June 21 SQBBA Auction, Brisbane | | | | |
| July 04 | General Meeting | North Rockhampton High School (NRHS) | 7.15pm | <u>Table Show</u> A/A & Y/B & N/F <u>FEATURE</u> :Crop Feeding – Russell Ogden. |
| July 15 Tuesday | Committee Meeting Discuss AGM, Club Trip, October Breeders Show, Judge, | Venue: Evans residence | 5:45pm | |
| July 25-27. TBC | Visit to an Aviary TBC Attend Moreton Club Annual Auction | CLUB ANNUAL EVENT | | |
| August 01 AGM & Monthly Meeting) | ANNUAL GENERAL MEETING General & Judges Meetings to follow | North Rockhampton High School (NRHS) | 7.15pm | No <u>Table Show</u> or <u>FEATURE</u> |
| August 09 Newcastle Budgerigar Auction Saturday | | | | |
| Sept 05 | General Meeting | NRHS | 7.15pm | <u>Table Show</u> A/A & Y/B & N/F <u>FEATURE</u> : Breeding Lesser Varieties: Darrel Fisher & John Guinane |

| | | | | |
|-------------------------|---|--------------------------------|-------------------------------------|--|
| September 16 Tuesday | Committee Meeting Discuss Calendar of events, Venue booking. End of year event, Judge for Annual Show, donation for Meeting Room. Vendors for Auction 2026 | Venue: Evans residence | 5:45pm | |
| Oct 03 | General Meeting | NRHS | 7.15pm | <u>Table Show</u> A/A & Y/B & N/F <u>FEATURE</u> : Simple Versus Complex, Hobby versus Chore: Kev OC |
| Oct 06 Monday | ENTRIES for Breeders Show due tonight 8:00pm | | Phone, Text or email Show Secretary | |
| Oct 11 Saturday | 57th BREEDERS SHOW Judge: TBC Selling class. | Nth R'ton High School Hall. | Benching by 8:50am | A/A & Y/B & NF Judging commences 9:00am |
| Nov 07 | General Meeting | NRHS | 7.15pm | <u>Table Show</u> A/A & Y/B & N/F <u>FEATURE</u> :Bring an Idea – All members. <u>Q& A</u> |
| Sunday Nov 23 | CHRISTMAS BREAKUP, | TBA | | |
| Dec 05 | General Meeting | NRHS | 7.15pm | <u>Table Show</u> A/A & Y/B & N/F <u>FEATURE</u> : Medications for a healthy flock – Scott Eriksen |
| Dec 14 | Committee Meeting If required to finalise Calendar 2026, etc. | Venue : Evans residencer | | |

RINGS: 2025 Rings are 65 cents each for coded and un-coded rings, sold in lots of 25. Postage is extra (\$5.00).
Contact Shayla Evans. 0408 731 846

Capricornia Budgerigar Society Inc.



57th Annual Show.

Saturday, 15th March 2025.

Venue: NORTH ROCKHAMPTON STATE HIGH SCHOOL Assembly Hall,
Berserker Street' North Rockhampton.

Judge: TBA

Chief Steward: Russell Ogden

Show Secretary: Kev O'Callaghan

Entries: All entries must be on CBS approved entry forms
(provided)

Exhibitors need to use the class numbers as per this
schedule.

Entry Fee: \$2.00 per bird up to a maximum of \$20.00.

Team of Three: \$2.00 per team.

Entries Close: Monday 10th March, at 9 pm. kevocalloptusnet.com.au
ph 0411 956 345

Late entries will not be accepted.

Benching: To be completed by 8-50 am.

Judging: Commences at 9-00 am.

**All persons responsible for winning exhibits must be present for checking of
rings on completion of judging or exhibits will be disqualified.**

Presentation of Trophies: Approximately 30 minutes after completion of judging.

Release of birds to follow presentation. The Chief Steward will advise time.

Food and drinks will be available throughout the day.

Please Note:

- Birds entered in any Class '28' must have the Variety NOMINATED on the Entry Form by the Owner.
- CBS Inc. Club show rules must be strictly adhered to.
- Proof of ownership must be produced for all winning exhibits, CBS rings excluded.
- Drinkers must be in show cages.
- Standard seed mix to be used as floor covering in cages.
- Cage stickers to be adhered on the RIGHT hand side of cage.
- It is the Exhibitor's responsibility to ensure all of their birds are nominated in the correct classes and mark cages accordingly.
- **All birds entered must be Owner-bred.**
-

CAPRICORNIA BUDGERIGAR SOCIETY INC. BREEDERS SHOW AWARDS LIST

| | |
|--|---|
| <u>Grand Champion of Show.</u> | Jack Martin Trophy, plus \$25.00 Cash Prize |
| <u>Ch. Opposite Sex of Show.</u> | O'Callaghan Family Trophy. |
| <u>Ch. Young Bird of Show</u> | Mitton Family Trophy. |
| <u>Ch. Intermediate Bird of Show</u> | Rod and Val Gardiner Trophy. |
| <u>Ch. Beginner Bird of Show.</u> | CBS Trophy. |
| <u>Ch. Nestfeather of Show.</u> | CBS Trophy. |
| <u>Best Team of 3, must be all same Sex.</u> | \$15.00 cash prize. |
| <u>Champion Young Cock of Show</u> | \$50 Cash Award |
| <u>Champion Young Hen of Show</u> | \$50 Cash Award |

| | |
|---|--|
| <u>Champion Derby Bird.</u> | Noel Shanahan Memorial Trophy. |
| <u>Champion Derby Bird- Beginner.</u> | CBS Trophy. |
| <u>Derby Bird Cock and Hen.</u> | Share the Derby Rings Prizemoney Pool. |
| <u>CBS Variety Bird. (2025 is Greywing)</u> | CBS Trophy. |
| <u>Best Lesser Variety Bird of Show.</u> | The GFE Perpetual Trophy** donated by Fisher, Guinane & Eriksen Families |

** Best of Classes 7,8,9,12,13,14,19,20,21,26,28.

OPEN, INTERMEDIATE, BEGINNER CLASSES each receive:

| | |
|--------------------------------|---------------------------|
| Champion Any Age Cock | \$15.00 cash prize |
| Champion Any Age Hen | \$15.00 cash prize |
| Champion Young Cock | \$15.00 cash prize |
| Champion Young Hen | \$15.00 cash prize |
| Champion Nestfeather | \$15.00 cash prize |
| Reserve Champion Any Age Cock) | \$10.00 cash prize |
| Reserve Champion Any Age Hen | \$10.00 cash prize |
| Reserve Champion Young Cock | \$10.00 cash prize |
| Reserve Champion Young Hen | \$10.00 cash prize |
| Reserve Champion Nestfeather | \$10.00 cash prize |

Champion overall in each of 27 ANBC Variety & AOSV :
\$15.00 Cash Award per variety

BUDGERIGAR SCHEDULE for CBS Inc. SHOWS

| VARIETY | ANY AGE COCK | ANY AGE HEN | YOUNG BIRD COCK | YOUNG BIRD HEN | NEST FEATH ER |
|--|--------------------|-------------------|-----------------------|-------------------|---------------------|
| NORMAL GREEN | 1 | 101 | 201 | 301 | 401 |
| NORMAL GREY GREEN | 2 | 102 | 202 | 302 | 402 |
| NORMAL BLUE | 3 | 103 | 203 | 303 | 403 |
| NORMAL VIOLET | 4 | 104 | 204 | 304 | 404 |
| NORMAL GREY | 5 | 105 | 205 | 305 | 405 |
| YELLOW FACED BLUE (Normal Only) | 6 | 106 | 206 | 306 | 406 |
| AUSTRALIAN GOLDEN FACED BLUE (Normal Only) | 7 | 107 | 207 | 307 | 407 |
| BLACK EYED SELF | 8 | 108 | 208 | 308 | 408 |
| DILUTE | 9 | 109 | 209 | 309 | 409 |
| LUTINO | 10 | 110 | 210 | 310 | 410 |
| ALBINO | 11 | 111 | 211 | 311 | 411 |
| DARK EYED CLEAR | 12 | 112 | 212 | 312 | 412 |
| CLEARWING | 13 | 113 | 213 | 313 | 413 |
| GREYWING | 14 | 114 | 214 | 314 | 414 |
| CINNAMONWING | 15 | 115 | 215 | 315 | 415 |
| SPANGLE DOUBLE FACTOR | 16 | 116 | 216 | 316 | 416 |
| OPALINE | 17 | 117 | 217 | 317 | 417 |
| OPALINE A.O.S.V. (Includes Blackeye, Clearwing, Greywing, Cinnamonwing) | 18 | 118 | 218 | 318 | 418 |
| CLEARBODY (includes Opaline) | 19 | 119 | 219 | 319 | 419 |
| LACEWING (includes Opaline) | 20 | 120 | 220 | 320 | 420 |
| FALLOW | 21 | 121 | 221 | 321 | 421 |
| SPANGLE (Normal Only, not class 23 combination) | 22 | 122 | 222 | 322 | 422 |
| SPANGLE A.O.S.V. (includes Greywing, Cinnamonwing, Opaline, Fallow) | 23 | 123 | 223 | 323 | 423 |
| DOMINANT PIED (includes Greywing, Cinnamonwing, Opaline, Fallow, Spangle) | 24 | 124 | 224 | 324 | 424 |
| DANISH RECECCIVE PIED (includes Greywing, Cinnamon, Opaline, Fallow, Spangle) | 25 | 125 | 225 | 325 | 425 |
| CRESTED | 26 | 126 | 226 | 326 | 426 |
| AUSTRALIAN WHITE CAP | 27 | 127 | 227 | 327 | 427 |
| A.O.V. / A.O.S.V. (includes Darkwing, Saddleback) | 28 | 128 | 228 | 328 | 428 |

Birds entered in Class 28, 128, 228, 328, 428 must have the 'variety indicated on the Show Cage sticker by the exhibitor.

Please Note :- only combinations of sections 8 to 15 is Yellow Faced Blue. See ANBC matrix at https://anbc.iinet.net.au/uploads/9/8/7/0/9870161/2019_anbc_estandard_2019_master.pdf for combinations of other sections 16-27

MEMBERSHIP APPLICATION / RENEWAL
2025

Capricornia Budgerigar Society Inc.



Forward to: Capricornia Budgerigar Society Inc.

Secretary: P.O. Box 10165 Frenchville 4701

Or email to cbudgerigars@gmail.com

Surname: _____

Christian Name: _____ (all if partnership)

Address: _____

Email: _____ ****This is vital to allow prompt delivery of information to all members.**

Phone Number: _____ Mobile: _____

I agree to keep my birds in a suitable environment and use appropriate husbandry practices.

My current exhibition status is (Open, Intermediate, Beginner.)

Applicant's Signature.....

Proposer's Name.....Proposer's Signature.....

Date.....

Please make cheques payable to: " Capricornia Budgerigar Society Inc."

Membership Rates for 2024:

Senior: \$40.00

Partnership: \$40.00

Family: \$40.00

Memberships due by January 01 each year. Membership after June 30 will be \$20 for remainder of current year.

CBS Inc WEBPAGE: **www.capbuds.org**